



Oncology Unit, 3rd Department
of Medicine, National and
Kapodistrian University, Athens

Organized by:

Hellenic Association
of Lung Cancer



Oncology Center of Biomedical
Education and Research

Under the auspices of:



The Turkish Society
of Lung Cancer



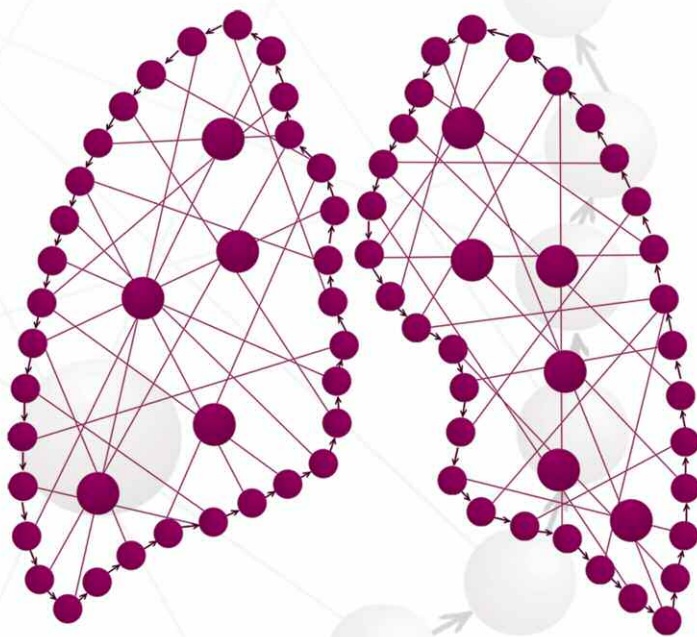
Medical School, National and
Kapodistrian University, Athens

ΠΑΝΕΛΛΗΝΙΟ ΣΥΝΕΔΡΙΟ

Καρκίνος Πνεύμονα

Lung Cancer Network

«From the Bench to the Bedside»



January | 16-18 | 2020

Crowne Plaza Athens, Greece

22 CME-CPD points from the Panhellenic Medical Association

Scientific Program

Invitation Letter

The recent, increasing amount of knowledge regarding lung cancer, especially in the field of basic science, holds promise for personalized treatment of these patients that would provide more effective and less toxic therapeutic approaches, improving the prognosis of the patients with thoracic malignancies. On the other hand, the immense bulk and the rapid recycling of the new information makes difficult its understanding, evaluation and interpretation by the clinicians. Therefore, the «translation» of our recently acquired knowledge from the lab bench to the bedside is neither smooth nor is it without obstructions, due to the existing «gaps» in our understanding and the often contradictory «signals» from clinical trials.

The success of our six previous meetings has prompted us to organize the 7th Lung Cancer Network «From the Bench to the Bedside». Our aim is to narrow the distance between the bench lab and the patient's bed, between the clinical trials outcome and the routine practice, by bringing together basic scientists, clinical researchers and lung cancer specialists. Our multidisciplinary, international faculty will present the latest clinical data and provide treating physicians with practical information regarding the clinical significance of the histological, molecular and genetic profile of the tumor and how the implementation of targeted agents in the therapeutic algorithm changes the clinical practice of lung cancer patients.

Finally, we anticipate that our meeting, with the presence of our distinguished faculty, would provide the opportunity and motivation for discussions regarding the emerging therapies and set the pavement for the future research and strategies towards the personalized treatment of lung cancer patients.

We cordially welcome you all in Athens in January 16-18 2020 for a stimulating, innovative and educational meeting.

The Chairs of the Meeting



Kostas Syrigos, MD, PhD, FCCP
Professor & Head of Medicine and Medical Oncology
Athens University School of Medicine, Greece
Vis. Professor, Yale School of Medicine, USA



David Rimm, MD, PhD
Professor, Director of Translational Pathology
Yale University School of Medicine, USA

Scientific Program

THURSDAY

January 16th

2 0 2 0

08:45-09:00 Registrations

09:00-11:00 Oral abstracts presentations - MASTER

Chair: **G. Evangelou, D. Vassos**

- 09:00-09:30 Oral presentation 1
- 09:30-10:00 Oral presentation 2
- 10:00-10:30 Oral presentation 3
- 10:30-11:00 Oral presentation 4

11:00-11:30 Break

11:30-14:00 Oral abstracts presentations - MASTER

Chair: **V. Ramfidis, D. Vassos**

- 11:30-12:00 Oral presentation 1
- 12:00-12:30 Oral presentation 2
- 12:30-13:00 Oral presentation 3
- 13:00-13:30 Oral presentation 4
- 13:30-14:00 Oral presentation 5

14:00-16:00 Coffee break

16:00-18:00 Invited lectures

Chair: **D. Nasi, I. Tourkantonis**

- 16:00-16:20 The arrivals of biosimilars. **M. Kiagia**
- 16:20-16:40 Circulating tumor DNA signature. **D. Grapsa**
- 16:40-17:00 The clinical significance of microbiome. **G. Kounadis**
- 17:00-17:20 Optimal management of pleural effusion. **A. Vassias**
- 17:20-17:40 Optimal management of leptomeningeal spread. **M. Bakogeorgos**
- 17:40-18:00 Discussion

18:00-19:45 Collecting and using real-world evidence

Chair: **D. Stefanou, E. Kokkotou**

- 18:00-18:15 The lung cancer diagnosis patient pathway. **E. Ntalakou**
- 18:15-18:30 End-of-life cost for lung cancer patients. **Kourlaba**
- 18:30-18:45 Advanced NSCLC patients, real-world treatment patterns and outcomes. **E. Kokkotou**
- 18:45-19:00 EGFR Mut+ NSCLC patients, preliminary results from a Greek registry. **A. Papaspiliou**
- 19:00-19:15 Real world experience of Nivolumab in NSCLC patients in Greece. **L. Stournara**
- 19:15-19:30 Mean health care cost for lung cancer patients the first year after diagnosis. **G. Stefanou**
- 19:30-19:45 Discussion



**From the Bench
to the Bedside**

Lung Cancer
Network

FRIDAY

January 17th

2 0 2 0

09:00-10:30**Invited lectures**Chair: **I. Athanasiadis, I. Mountzios**

09:00-09:20

What is the Spread Through Air Spaces (STAS) phenomenon?

M. Toki

09:20-09:40

WHO lung cancer histological classification.

L. Kaklamanis

09:40-10:00

Update on TNM staging system.

I. Gkiozos

10:00-10:20

Radiomics: images are more than pictures.

K. Tavernaraki

10:20-10:30

Discussion

10:30-12:00**Invited lectures**Chair: **E. Samantas, H. Linardou**

10:30-10:50

Is there a role for I-O monotherapy in the 1st Line mNSCLC?**I. Kotteas**

10:50-11:10

Is there a role for immunotherapy in the 2nd line mNSCLC?**V. Ramfidis**Sponsored by **A. Charpidou**

11:10-11:30

Integration of immunotherapy in localized NSCLC.

11:30-11:50

Optimal systemic treatment of patients with CNS involvement.

F. Yumuk

11:50-12:00

Discussion

12:00-12:30**Coffee break****12:30-13:30****Industry sponsored lectures**Chair: **G. Lainakis**

12:30-13:00

Treating ALK (+) NSCLC: is the success story ... good enough ?

D. NasiSponsored by 

13:00-13:30

Planning the therapeutic journey to maximize the treatment outcomes in EGFR (+) NSCLC patients.

S. LampakiSponsored by **13:30-15:00****I-O toxicity: presentation & discussion of clinical cases**Chair: **N. Kentepozidis, S. Tsagkoulis**

13:30-13:50

Endocrinologic toxicity of ICIs.

A. Asimakopoulou

13:50-14:10

Pulmonary toxicity of ICIs.

D. Vassos

14:10-14:30

Neurologic toxicity of ICIs.

D. Mantelos

14:30-14:50

Cases of special interest.

A. Papaspiliou

14:50-15:00

Discussion

15:00-16:00**Light lunch**

16:00-17:00 Application of immunotherapy in the clinical setting

Chair: **L. Crinò, A. Charpidou**

- 16:00-16:15 PDL1 evaluation: pitfalls and results evaluation.
16:15-16:30 Optimal 1st line treatment for mutation naïve patients.
16:30-16:45 Management of oligometastatic disease.
16:45-17:00 Discussion

**K. Kerr
E. Goker
Y. Eralp**

17:00-18:00 Invited lectures

Chair: **Y. Eralp, I. Gkiozos**

- 17:00-17:20 TMB as predictor of immuno-oncology therapy.
17:20-17:40 Lung cancer surgery in the 21st century.
17:40-18:00 Discussion

**F. Hirsch
F. Detterbeck**

Doctor Honoris Causa

- 18:00-18:30 Transfer from Crowne Plaza to Athens National University Main Auditorium (bus)
19:00-20:30 Ceremony of conferment of the Doctor Honoris Causa to Professor David Rimm

SATURDAY

January 18th

2 0 2 0

09:00-10:30 Molecular considerations in oncogene driven tumors

Chair: **W. Eberhardt, A. Kotsakis**

- 09:00-09:20 Analytic approaches to understanding PD-L1 expression and mechanism of action.
09:20-09:40 Liquid biopsies: facts and myths.
09:40-10:00 Next Generation Sequencing: is there any clinical use?
10:00-10:20 Mechanisms of acquired resistance to EGFR TKIs.
10:20-10:30 Discussion

**D. Rimm
L. Crinò
F. Hirsch
N. Normanno**

10:30-12:00 Therapeutic considerations in oncogene driven tumors

Chair: **F. Hirsch, Ch. Emmanoulidis**

- 10:30-10:55 Current treatment algorithms for EGFR-mutated patients.
10:55-11:20 Current treatment algorithms for ROS1+ patients.
11:20-11:45 Targeted therapy beyond EGFR, ALK and ROS1.
11:45-12:00 Discussion

**L. Landi
B. Oyan-Uluc
V. Papadimitrakopoulou**

12:00-12:30 Coffee break



SATURDAY

January 18th

2 0 2 0

12:30-13:30 Industry sponsored lecturesChair: **Y. Eralp, K. Syrigos**

12:30-12:50 Lorlatinib in ALK+ NSCLC: the next step.

E. LinardouSponsored by  Pfizer12:50-13:10 Immunotherapy in 1st line NSCLC: from trials to practice.**S. Agelaki**Sponsored by  MSD13:10-13:30 I O combination in 1st line NSCLC - practice changing?**F. Grossi**Sponsored by  Bristol-Myers Squibb**13:30-14:30 Invited lectures**Chair: **V. Papadimitrakopoulou, E. Samantas**

13:30-13:50 The role of targeted therapies in early stages of NSCLC.

W. Eberhardt

13:50-14:10 Immunotherapy in oncogene driven mNSCLC.

S. Gettinger

14:10-14:30 Immunotherapy biomarkers beyond PD-L1.

D. Rimm**14:30-16:30 Light lunch****16:30-17:30 Optimal management of LCNEC**Chair: **M. Erman, I. Boukovinas**

16:30-16:50 Histological and molecular considerations.

K. Kerr

16:50-17:10 Immunotherapy in mLCNEC: is there a role?

R. Pirker

17:10-17:30 Optimal therapeutic algorithm for mLCNEC patients.

A. Passaro**17:30-18:45 Updates on SCLC & mesothelioma**Chair: **F. Barlesi, I. Athanasiadis**

17:30-17:50 Molecular targets and therapies for SCLC.

M. Erman

17:50-18:10 Immunotherapy approaches for SCLC.

M. Gottfried

18:10-18:30 Surgery for SCLC: is there a role?

F. Detterbeck

18:30-18:45 Discussion

18:45-19:00 Break**19:00-20:30 Immunotherapy perspectives**Chair: **M. Gottfried, S. Agelaki**

19:00-19:20 Phase I studies with novel immunotherapeutics.

S. Gettinger

19:20-19:40 Novel combinations in I-O clinical trials.

V. Papadimitrakopoulou

19:40-20:00 Optimal dosing and duration of I-O therapy.

F. Barlesi

20:00-20:20 Sequencing of I-O therapies.

M. Garassino

20:20-20:30 Discussion

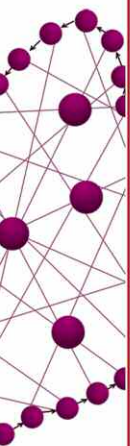
20:30 Conclusions

Faculty



AGELAKI SOFIA	Associate Professor of Medical Oncology, University of Crete, Greece
ATHANASIADIS ILIAS	Medical Oncologist, Director of Oncology Clinic, “Mitera” (Hygeia Group), Associate Professor of Oncology, Northwestern University, Chicago
ASIMAKOPOULOU ASIMINA	Endocrinologist, MD, MSc, cPhD, Academic Fellow, 3 rd Department of Medicine, Medical School of Athens, “Sotiria” General Chest Disease Hospital, Athens, Greece
BAKOGEOGOS MARIOS	Medical Oncologist, Consultant, Department of Medical Oncology, 251 Hellenic Air Force Hospital, Athens, Greece
BARLESI FABRICE	MD, PhD Professor of Medicine, Head of Multidisciplinary Oncology & Therapeutic Innovations Department, APHM, Aix-Marseille University, France
BOUKOVINAS IOANNIS	MD, PhD, PharmaD, Head of Oncology Unit, “Bioclinic”, Thessaloniki, Greece
CHARPIDOU ANDRIANI	MD, PhD, FCCP, Chest physician, Head of Clinical Trials Bureau 3 rd Department of Internal Medicine, Medical School University of Athens, Academic Fellow in Thoracic Oncology, University of Athens
CRINO LUCIO	MD, Director of Medical Oncology Division, Department of Oncology, University Hospital of Perugia, Italy
DETTERBECK FRANK	MD, FACS, FCCP, Professor of Surgery, Chief of Thoracic Surgery, Yale University, USA
EBERHARDT WILFRIED	MD, Department of Medical Oncology, West German Cancer Center, Ruhrlandklinik, University of Duisburg-Essen, Essen, Germany
EMMANOULIDIS CHRISTOS	Medical Oncologist, Interbalkan Medical Centre (F), Greece, Ass. Professor UCLA
ERALP YESIM	MD, Professor of Medical Oncology and Internal Medicine, Acibadem Maslak Hospital, Istanbul, Turkey
ERMAN MUSTAFA	MD, Professor, Department of Medical Oncology, Hacettepe University, Ankara, Turkey
EVANGELOU GEORGIOS	Medical Oncologist, Assistant Consultant Oncology Unit, 3 rd Department of Medicine, Medical School of Athens, “Sotiria” General Chest Disease Hospital, Athens, Greece
GARASSINO MARINA	Chief of Medical Thoracic Oncology Unit, Istituto Nazionale dei Tumori di Milano, Medical Oncology Unit, Italy
GETTINGER SCOTT	MD, Professor of Medicine, Medical Oncology, Yale University School of Medicine, USA
GKIOZOS IOANNIS	MD, PhD, FCCP, Pulmonologist, Oncology Unit, 3 rd Department of Medicine, Medical School of Athens, “Sotiria” General Chest Disease Hospital, Athens, Greece
GOKER ERDEM	MD, Professor of Medicine and Oncology, President of Turkish Lung Cancer Society, Turkey
GOTTFRIED MAYA	MD, Head of Oncology Department, Meir Medical Center, Kfar Saba, Israel
GRAPSA DIMITRA	MD, PhD, Head of Translational Research, Oncology Unit, Medical School, National and Kapodistrian University of Athens, Greece





GROSSI FRANCESCO	Dr, Medical Oncologist, Director, Division of Medical Oncology, Fondazione IRCCS Ca' Granda Ospedale Maggiore Policlinico, Milan, Italy
HIRSCH FRED	MD, PhD, Executive Director, Center for Thoracic Oncology, Mount Sinai Cancer, Mount Sinai Health System, Professor of Medicine, Icahn School of Medicine, Joe Lowe and Louis Price Professor of Medicine, Associate Director, Tisch Cancer Institute, USA
KAKLAMANIS LOUKAS	MD, D.Phil, Department of Pathology, Head, "Onassis" Cardiac Surgery Center, Athens, Greece
KENTEPOZIDIS NIKOLAOS	MD, MSc, PhD, Medical Oncologist, Director of Oncology Clinic, 251 General Airforce Hospital, Athens, Greece
KERR KEITH	Professor, Consultant Pathologist, Department of Pathology, Aberdeen Royal Infirmary, Professor of Pulmonary Pathology, Aberdeen University Medical School, Foresterhill, Aberdeen, Scotland, UK
KIAGIA MARIA	MD, PhD, Internist, Oncology Unit, "Hygeias Melathron" Hospital, Athens, Greece
KOKKOTOU ELENI	MD, MSc, Pulmonologist, Clinical fellow of Oncology Unit, 3 rd Department of Medicine, Medical School of Athens, "Sotiria" General Chest Disease Hospital, Athens, Greece
KOTSAKIS ATHANASIOS	Associate Professor of Medical Oncology, School of Medicine, University of Thessaly, Director of the Department of Medical Oncology, General University Hospital of Larissa, Greece
KOTTEAS ILIAS	PhD, MD, Consultant Medical Oncologist, Oncology Unite, 3 rd Department of Medicine, Medical School of Athens, "Sotiria" General Chest Disease Hospital, Athens, Greece
KOUNADIS GEORGIOS	Gastroenterologist Academic Fellow 3 rd Department of Medicine, Medical School of Athens, "Sotiria" General Chest Disease Hospital, Athens, Greece
KOURLABA GEORGIA	Biostatistician, RWE & HTA Consultant, Managing Partner, ECONCARE, Greece
LAINAKIS GEORGIOS	MD, Medical Oncologist, "Henry Dunant" Hospital Center, Athens, Greece
LAMPAKI DIMITRA	MD, PhD, Pulmonologist, Academic Scholar, Aristotle University of Thessaloniki, Pulmonary Department, Greece
LANDI LORENZA	MD, Medical Oncologist, AUSL Romagna, Ravenna, Italy
LINARDOU HELENA	MD, PhD, PhD Imperial College London, Medical Oncologist, Director, Oncology Unit, "Metropolitan" Hospital, Athens, Greece
MANTELOS DIMITRIOS	Dr, MD, PhD, Neurologist, "Hygeia-Mitera" Hospital, Athens, Greece
MOUNTZIOS IOANNIS	MSc, PhD, Medical Oncologist, 2 nd Oncology Department and Clinical Trials Unit, "Henry Dunant" Hospital Center, Athens, Greece
NASI DESPOINA	Medical Oncologist, Medical Center of Athens, Oncology Unit, 3 rd Department of Medicine, Medical School of Athens, "Sotiria" General Chest Disease Hospital, Athens, Greece
NORMANNO NICOLA	MD, Cell Biology and Biotherapy Unit, Research Department, I.N.T. Fondazione G. Pascale, Naples, Italy
NATALAKOU ELEFThERIA	MD, Internist, Clinical Fellow of Oncology Unit, 3 rd Department of Medicine, Medical School of Athens, "Sotiria" General Chest Disease Hospital, Athens, Greece

OYAN ULUK BASAK	MD, Acibadem University, Medical Oncology Section, Acibadem Altunizade Hospital, Istanbul, Turkey
PAPADIMITRAKOPOULOU VALI	Vice President-Clinical Development Leader, Global Product Development at Pfizer
PAPASPILIOU AGGELIKI	MD, Pulmonologist, Clinical Fellow of Oncology Unit, 3 rd Department of Medicine, Medical School of Athens, "Sotiria" General Chest Disease Hospital, Athens, Greece
PASSARO ANTONIO	MD, PhD, Division of Thoracic Oncology, European Institute of Oncology – IEO, Milan, Italy
PIRKER ROBERT	MD, Professor of Medicine, Department of Medicine I, Medical University of Vienna, Austria
RAMFIDIS VASILEIOS	MD, MSc, Medical Oncologist, 251 General Air Force Hospital, Greece
RIMM DAVID	MD, PhD, Professor of Pathology and Medicine, Director of Translational Pathology, Director, Yale Pathology Tissue Services, Department of Pathology, Yale University School of Medicine, USA
SAMANTAS EPAMINONDAS	MD, Medical Oncologist, Director, 3 rd Oncology Dept, "Agii Anargyri" Cancer Hospital, Athens, Greece
STEFANOU DIMITRA	MD, PhD, Medical Oncologist, Oncology Unit, 3 rd Department of Medicine, Medical School of Athens, "Sotiria" General Chest Disease Hospital, Athens, Greece
STEFANOU GARYFALLIA	MSc, Senior Biostatistician, ECONCARE, Athens, Greece
STOURNARA LAMPRINI	Pneumonologist, 3 rd Department of Internal Medicine, Oncology Unit, 3 rd Department of Medicine, Medical School of Athens, "Sotiria" General Chest Disease Hospital, Athens, Greece
SYRIGOS KOSTAS	MD, PhD, FCCP, Professor & Head of Medicine and Medical Oncology, Athens University School of Medicine, Greece, Vis. Professor, Yale School of Medicine, USA
TAVERNARAKI KYRIAKI	Dr, MSc, PhD, Consultant Radiologist, Imaging and Interventional Radiology Department, "Sotiria" General Chest Disease Hospital, Athens, Greece
TOKI MARIA	MD, MSc, Resident in Internal Medicine, "Sotiria" General Chest Disease Hospital, Athens, Greece, Research Associate, Yale University, New Haven, USA
TOURKANTONIS IOANNIS	MD, PhD, Medical Oncologist, Oncology Unit, 3 rd Department of Medicine, Medical School of Athens, "Sotiria" General Chest Disease Hospital, Athens, Greece
TSAGKOULI SOFIA	MD, Chest Physician, Oncology Unit, 3 rd Department of Medicine, Medical School of Athens, "Sotiria" General Chest Disease Hospital, Athens, Greece
VASSIAS ANTONIOS	MD, Pulmonologist, Oncology Unit, 3 rd Department of Medicine, Medical School of Athens, "Sotiria" General Chest Disease Hospital, Athens, Greece
VASSOS DIMITRIOS	MD, MSc, Pulmonologist, Clinical fellow of Oncology, Oncology Unit, 3 rd Department of Medicine, Medical School of Athens, "Sotiria" General Chest Disease Hospital, Athens, Greece
YUMUK FULDEN	Professor, Dr, Marmara University Medical Faculty, Department of Internal Medicine, Chief, Division of Medical Oncology, Turkey



Information

Organized by

Oncology Unit, 3rd Department of Medicine, National and Kapodistrian University, Athene
Hellenic Association of Lung Cancer
Oncology Center of Biomedical Education and Research

Under the auspices of:

The Turkish Society of Lung Cancer
Medical School, National and Kapodistrian University, Athens, Greece

Meeting dates

January 16-18, 2020

Meeting venue

Crowne Plaza Hotel
50 Michalakopoulou str.
115 28 Athens, Greece
Tel.: +30 210 7278600

Registration cost

Type of registration	Cost
Doctors	200€
Residents	100€
Nurses	free
Medical students	free

Registration cost includes:

- Admission to all sessions & exhibition area
- Meeting material
- Certificate of attendance

CME Accreditation

The content of the meeting will be submitted for CME accreditation. Accreditation will be received from the Panhellenic Medical Association.

Name badges

All registered participants will receive name badges, which they are kindly requested to wear at all times. Each badge will have a barcode for monitoring the hours of attendance.

Certificate of Attendance

All registered participants who have attended at least 60% of the total scientific program will receive a certificate of attendance from the secretariat desk after the closing ceremony.

Meeting's Secretariat



E.T.S. Events & Travel Solutions S.A.

El. Venizelou 154, 171 22 N. Smyrni - Athens, Greece
Tel.: +30 210 98 80 032, Fax: +30 210 98 81 303
E-mail: ets@otenet.gr, ets@events.gr, Website: www.events.gr